

# GOLDEN TRIANGLE PLANNING & DEVELOPMENT DISTRICT, INC.

EST.  
1971

VOLUME 25:  
ISSUE IV

OCT.-DEC. 2025

662-324-7860



## INSIDE THIS ISSUE

WIOA SUCCESS STORY

SENIOR ENRICHMENT  
CENTERS

STAFF ANNIVERSARIES

CHRISTMAS  
LUNCHEON

CLOSED-DOOR  
PHARMACY

MEDICAID WAIVER

### DIRECTOR'S MESSAGE

This holiday season, I'm incredibly grateful for God's faithfulness, the people we serve, and the people I get to work with every day.

At the Golden Triangle Planning and Development District, our work is about serving our neighbors and being good stewards of our resources.

Each project and program affects real lives, real families, and real communities, and we love being a part of this work.

As we look to next year, my prayer is that we continue to lead with compassion and trust in God's direction.

Take this holiday season as a time to rest, spend time with family, and find peace in the joy and hope of this season. May God bless you and your family!



DIRECTOR RUPERT L. "SANTA" JOHNSON

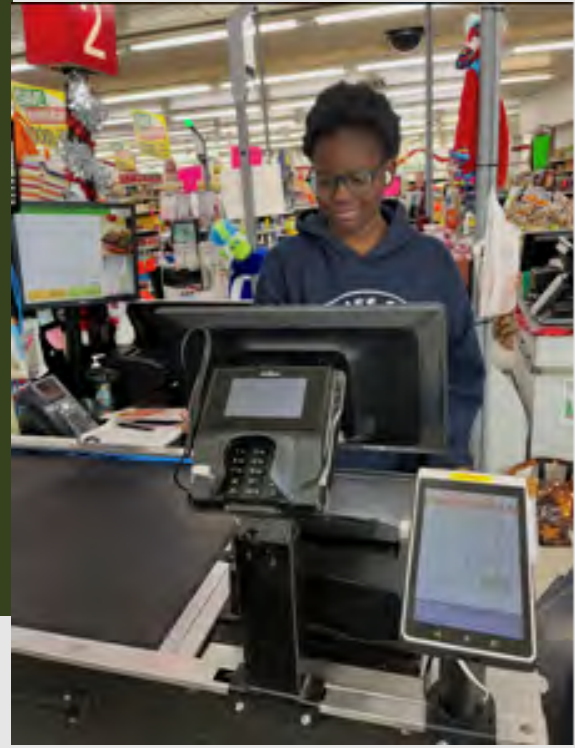
From the GTPDD family to yours, Merry Christmas and Happy New Year! We look forward to continue helping those in need in our local communities in 2026.



*Serving Choctaw, Clay, Lowndes, Noxubee, Oktibbeha, Webster and Winston Counties*

# WIOA GATEWAY PROGRAM: A SUCCESS STORY

*Zharia Morton*



Zharia Morton is a senior at Eupora High School and is currently receiving follow-up services through the Gateway program.

She is a very positive person who is always smiling. When she first applied and was accepted into the Gateway program, she had never held a job.

She was excited about the opportunity to receive essential job skills training and experience having a job.

She was on time and present for each training session and was eager to participate and learn.

She was nervous and apprehensive about starting to work but excited to put her new skills to use.

We met with her at Super Valu grocery store, where she would be completing her internship, on the afternoon before she was to start.

She was told she would be a cashier and was given her first week's schedule. We assured her she was ready for this and would do a great job if she applied the skills learned in class.

We encouraged her to be on time and have a positive attitude to co-workers and customers. We were sure she would do a great job.

Shortly after she began her internship, we went to Super Valu and saw her in action. She was doing an excellent job!

She was smiling and talking with customers. She was efficient at her job.

The store manager had nothing but positive things to say. He said that she was a quick learner and a hard worker with a friendly personality. The manager also commented that he was already considering hiring her once the internship ended.

She completed her internship and was excited to tell us she was hired. She enjoyed the work and looked forward to continuing as a Super Valu employee.

She has worked as a cashier for Super Valu for several months now.

She is still always smiling and conversing with customers as she scans their items and takes their payments.

Whenever we ask her how the job is going, she smiles and says, "I love my job!"

If you know a dependable young person who is interested in this program, contact Mitzi Lawrence at 662-324-5007.



# Senior Enrichment Centers



Christmas Luncheon at The Ranch House  
Columbus

## North Mississippi Rural Legal Services

Presentation on Elder Law and Estate Planning  
Wills, Deeds, Powers of Attorney and Healthcare Directives  
Columbus Senior Enrichment Center  
10 a.m. - 12 p.m.  
Jan. 12, 2025  
1522 Gardner Blvd., Columbus, MS



Game day for those who were not traveling or busy (yet) for the holidays! An assortment of games were set up to rotate and play cards, dominoes, and Mahjong.  
(Columbus Senior Center)

# Staff Anniversaries: 5+ Years

## October

Lisa Woods	09
Lucille Mosley	13
Diana Prince	14
David Alexander	17
Charlene Jones	20
Lauren Smith	25
Melody Benseid	27
Annie Sanders	27
Kallie Hubbard	05
Twiwecia Luster	07

## November

Cynthia Reese	13
Lindsey Livingston	13
Corwanda Love	05
Alicia Barry	24
Jessica Foxx	25

## December

Kristy Whitaker	07
Maria Lopez	22

**We appreciate our hard-working  
staff so much!**



*Leland James from Sturgis shows his artwork to the Home Economics Committee at the Starkville office*



*The Starkville office's Christmas tree greets everyone in the lobby during the holidays*



# Annual Staff Christmas Luncheon Starkville



**MERRY  
CHRISTMAS**



Every year, the GTPDD has a staff Christmas luncheon to bring everyone together through food and fellowship. The food is always great, but the people are even better! Merry Christmas from our family to yours!

### What does our pharmacy offer?

- Daily prescription medications and vitamins delivered right to your home
- Medications prepackaged and labeled with contents by date and time to take
- Delivered every 28 days so you never run out

**662-320-2011**

### What insurances are accepted?

- We accept most forms of prescription insurances

**Available to ANYONE in  
Choctaw, Clay, Lowndes,  
Noxubee, Oktibbeha,  
Webster and Winston  
counties**

## **GTPDD Closed-Door Pharmacy**

### How do I sign up?

- Call the pharmacy at 662-320-2011
- Schedule a home visit with our health information technician
- Our technician will create a list of your medications, doctors and other providers
- A pill planner will be made for the next few days while the rest of your medications are packaged to begin services

### How can I pay?

- Cash
- Personal check
- Money order
- Credit/debit card (Visa, Mastercard, Discover and American Express)
- Cards will be charged a 2.75% processing fee
- Payment is due at time of delivery
- No extra fees for packaging/delivery

# Elderly and Disabled Waiver

The Division of Medicaid is authorized by state legislation and the Centers for Medicare and Medicaid Services to administer the Elderly and Disabled waiver program.

The program provides home and community-based services that assist Medicaid beneficiaries to remain in their homes and avoid institutionalization. Eligibility is determined through a comprehensive preadmission screening process, which encompasses activities of daily living, sensory deficits, cognitive deficits, behaviors and medical conditions.

## Qualifications:

- Beneficiaries must be 21 years of age or older;
- Medicaid eligible;
- Require the same level of care as someone applying for admission to a nursing facility.

662-320-2003

# Medicaid Waiver Services

- **Case Management:** Everyone who participates in the waiver is assigned to a local case management team. This team consists of a Registered Nurse and Licensed Social Worker. They are responsible for managing and coordinating the services for each participant.
- **Medication Management:** This service is for participants with chronic health conditions who are prescribed a daily regimen of at least five prescription medications to receive consultations and follow up visits with a licensed pharmacist.
- **Personal Care Services (PCS):** These are supportive services provided in the home of the participant. They include assistance with light housekeeping, laundry, meal preparation, bathing, dressing, personal hygiene, and activities of daily living.
- **Adult Day Services:** This is a structured program that focuses on the strengths and abilities of the participant. This service allows participants to contact connections with their community and/or use all of their retained skills. Depending on the specific facility, the following services are provided: supervision and/or assistance with ADLs, group activities, nutritious meals and medication monitoring.
- **Home Delivered Meals:** A well-balanced meal is delivered to the home of the person who is unable to leave their home without assistance and/or is unable to prepare their own meals.
- **Institutional Respite and/or In-Home Respite:** This service is provided to participants who are unable to care for themselves; furnished on a short-term basis because of the absence or need for relief of those person’s normally providing the care.

## Medicaid Waiver RNs and LSWs:

Michelle Harris, RN Supervisor

<u>Oktibbeha</u>	<u>Lowndes</u>	<u>Noxubee</u>
#1: Tina McWhorter, RN Andrea Wright, LSW	#1: Angela Whitaker, RN Penny Harrison, RN	#1: Rachael Unruh, RN Lauren Smith, LSW
#2: Jennifer Grantham, LSW Jennifer Bridges, LSW	#2: Cindy Reese, RN Tennie Simpson, LSW	#2: Tammy Castle, RN Kallie Hubbard, LSW
#3: Paige Winfield, RN Christina Free, LSW	#3: Lindsey Livingston, RN Angelia Sansing, LSW	
#4: Megan Aucoin, LSW		
<u>Choctaw:</u>	<u>Webster:</u>	<u>Clay:</u>
Tina Gill, RN Kaylee Tisdale, LSW	Sydney Thompson, RN Lisa Woods, LSW	Mitzi Phelps, RN Lesa Wilson, LSW
	<u>Winston:</u>	
	Kim Mills, RN	



# Medicaid Waiver: The Spirit of Giving



Google defines Christmas as a celebration of the birth of Jesus Christ, symbolizing God's love, hope and salvation for humanity, but it has also evolved into a global cultural event focused on family, giving, kindness and tradition.

Wikipedia defines Christmas as "to give up one's very self - to think only of others - to bring the greatest happiness to others."

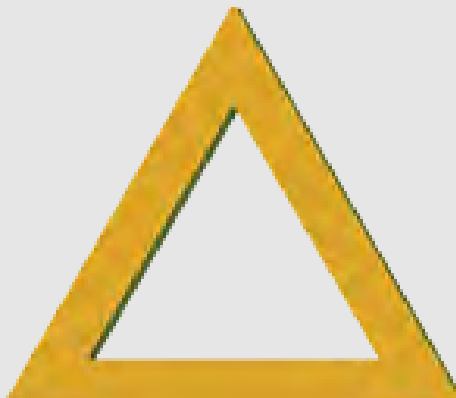
In the aspect of giving and kindness, the GTPDD Medicaid Waiver staff delivered gifts to clients in the GTPDD area. Warm clothes, blankets, toiletries, food and household items were some of the items purchased to assist clients with needs.

Many elderly people do not have family or friends to share the holiday with, so the Medicaid Waiver staff makes sure they are remembered.

Please take time this holiday season and the upcoming year to reach out and with telephone calls, visits, etc. to those in your community and brighten the day for others.





**CONTACTS AND SOCIAL MEDIA****Main Office: 662-324-7860****Pharmacy: 662-320-2011****Aging: 662-320-2001****Solid Waste: 1-800-217-6909****Main Office:****[gtpdd@gtpdd.com](mailto:gtpdd@gtpdd.com)****Pharmacy:****[PharmHIT@gtpdd.com](mailto:PharmHIT@gtpdd.com)****@GTrianglePDD****Main Office: 662-324-7328****Pharmacy: 662-320-2004****The GTPDD is online at [www.gtpdd.com](http://www.gtpdd.com).****GOLDEN TRIANGLE****Planning and Development District, Inc.**